

# ***Northridge Homeowners' Association***

*A Newsletter for the Northridge Community*

*Issue 33*

*September 2005*

## **2005 NORTHRIDGE PARKWAY HOMEOWNERS' ASSOCIATION BOARD MEMBERS**

Bill Shrum, *President*

Matt Cooper, *Vice President*

Jeff Mann, *Treasurer*

Jim Baker, *Member at Large*

Jill Roof, *Member at Large*

LeAnn Hillier, *Administrative Asst.*

Carroll Marty, *Green Space Project Mgr.*

## **GREEN SPACE PROJECT MANAGER REPORT**

It's been a busy summer for trees in Northridge. Several Willows and a dead Elm have been removed along the stream between Cattail and Monet bridges. Also, there are six new trees coming on October 15. Please let me know if you'd like to volunteer to help plant them.

We are developing a management plan for the ponds. We are attempting to get rid of all the cattails. Questions needing to be answered include: Do we want to keep all the grass mowed down to the water, or do we want some grass and trees growing by the water? If you have ideas or comments about the ponds, please let me know.

Carroll Marty, Green Space Project Manager

## **YARD CARE TIME IS HERE**

Has the heat of the summer killed off some of your vegetation? Or maybe your yard is just fine, but needing the dead blossoms trimmed. Fall is the time to prune dead branches, and remove yard waste. If you live on a cul-de-sac, the up-keep of the street circle is to be shared by you and your neighbors. Thanks for the help!

## **COMMENTS FROM THE PRESIDENT**

Your board was pleased with the turnout at our first ice cream social on August 21<sup>st</sup>. We estimated that approximately 100 people enjoyed ice cream and visiting with their neighbors. We are thinking that this should be an annual event. We might also consider some musical entertainment next year such as the Ames High School string quartet. We would be interested in your thoughts and input on how to make this a successful and enjoyable event.

We have been working with a local architectural firm regarding enhancements to our entryways. You can see the proposed design on our website ([www.northridge-ames.us](http://www.northridge-ames.us)). We believe having attractive, lighted entryways will be a benefit to all of our residents. We are also exploring ways to make our ponds cleaner and safer. Parents, please remind your children that it is strictly prohibited to wade or swim in the ponds!!! One of our ponds is approximately six feet in depth in the middle. This is an extremely important issue. Thank you for your cooperation.

Have a great Fall!!! Go Little Cyclones and Big Cyclones!!!

Bill Shrum, Board President

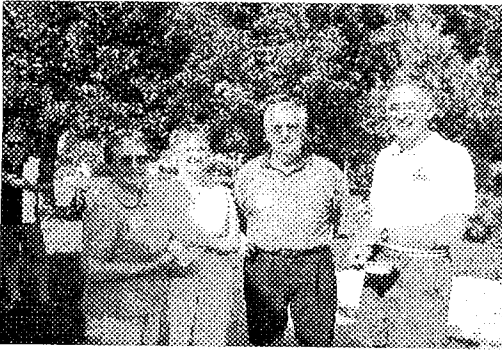
## **SCHOOL BUS INFORMATION**

School is back in session, and many neighborhood students are riding a bus. Some residents have expressed concern about bus stop locations and routing. Please note that Central Iowa Transit, Inc. (CIT) has established routes. It is CIT policy to locate stops away from intersections due to safety concerns. In addition, bus stops in Northridge are more numerous and closer together than required. Specific resident concerns should be directed to CIT.

Please remember the speed limit in residential neighborhoods is **25 mph**. Please watch your speed, especially around bus times, and help keep our children safe!

## ICE CREAM SOCIAL A SUCCESS

The social was enjoyed by all!



## LITTER REMOVAL

There have been some complaints of litter in the neighborhood. In an effort to keep our neighborhood beautiful, please clean up after yourself and put litter in its place.

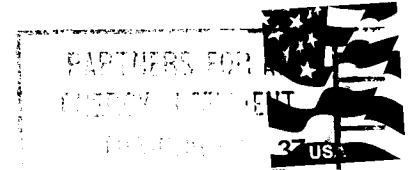
## CALL FOR VOLUNTEERS TO SERVE ON THE BOARD

Do you have a bit of time and a concern for the Northridge neighborhood? Consider volunteering to serve on the Board of Directors. Three of the five Board positions are opening up the first quarter of 2006. Terms are two years starting at the Annual meeting in January, and the Board meets once a month. Please consider offering your skills and time to this effort. Contact a current Board member or Administrative Assistant to express your interest.

## NEW ENTRYWAYS

A plan is underway to update the four Northridge entrances. The purpose of the change is to make all entrances consistent and to enhance the neighborhood. The changes include signage and lighting, as well as landscaping (although we will try to recycle as much vegetation as possible). Please visit the website at [www.northridge-ames.us](http://www.northridge-ames.us) to view the proposed entryway changes. Although we are still receiving cost estimates, the maximum total we are planning to spend is \$40,000 with a target start date this fall. Any comments can be directed to [nrboard@northridge-ames.us](mailto:nrboard@northridge-ames.us).

Northridge Parkway Homeowners' Association  
P.O. Box 645  
Ames, IA 50014



Northridge Homeowner

Ames, IA 50014